

Color Water Quality Sensor

WQS-Color-C Series



Overview

The color water quality sensor is a color online monitoring sensor with self-cleaning for long term reliable and maintenance free real time water quality monitoring. The sensor can be widely used in the fields of drinking water, tap water, water pipeline network, groundwater, and sewage.



Main Features

- Quick measurement, the shortest measurement cycle is 10 second
- No chemical reagent consumption, environmentally friendly
- Self-cleaning brushes for long maintenance-free cycles and low maintenance costs



Self Cleaning Brush

Specifications

Principle	Multi-wavelength absorption spectrometry	Pressure	6 bar
Dimension	φ30×301 mm	Material	Material: 316L stainless steel / Titanium (Optional)
Power requirements	DC+12 V ~ +24 V	Cleaning method	Cleaning brush
Measurement period	10 to 65535 seconds	Sample flow rate	<3 m/s
Operating temperature	0 to 50 °C	Communication	RS485(Modbus RTU) / Bluetooth

optical

Googol Technology (Overseas) Limited
Unit 1009, 10/F, C-Bons Intl. Center,
108 Wai Yip Street, Kwun Tong, Kowloon, Hong Kong
Tel: +852-2358-1033 Fax: +852-2719-8399
Web: <http://googoltech.com>
Email: info@googoltech.com

Chongqing Googol Changjiang Research Institute Co., Ltd.
Building 1, Electronic No. 5 Community,
Fenghuang Lake Industrial Park, Yongchuan District, Chongqing, China
Tel: +86-023-4982-3883
Web: <http://www.googolcjit.cn>
Email: googolcjit@googolcjit.com

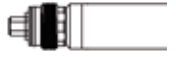

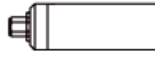

Color Water Quality Sensor

WQS-Color-C Series



Parameter Information

Parameter	Model No.	Range	Resolution	Accuracy
Color	WQS-Color-C	0-500 PCU	≤ 1 PCU	$\pm 3\%$ or ± 1.5 PCU
Temperature	WQS-Color-C	0-50°C	0.1°C	± 1 °C

Model	Description	IP rating	Pictures
WQS-Color-C-S01	5 pole aviation plug with waterproof connection thread	IP65	
WQS-Color-C-S11	Cable extending directly with waterproof connection thread	IP68	
WQS-Color-C-P01	5 pole aviation plug	IP65	
WQS-Color-C-P11	Cable extending directly	IP68	

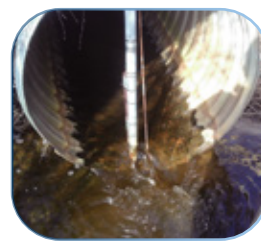
Application



Drinking water and
pipeline network
water quality
monitoring



Drinking water
plant effluent



groundwater



Sewage

optical